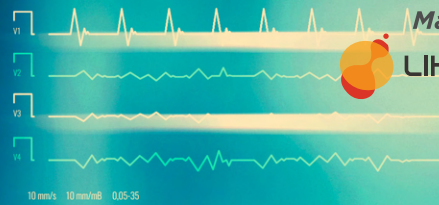




Developed by
Migene

Streamlined solutions for nucleic acid

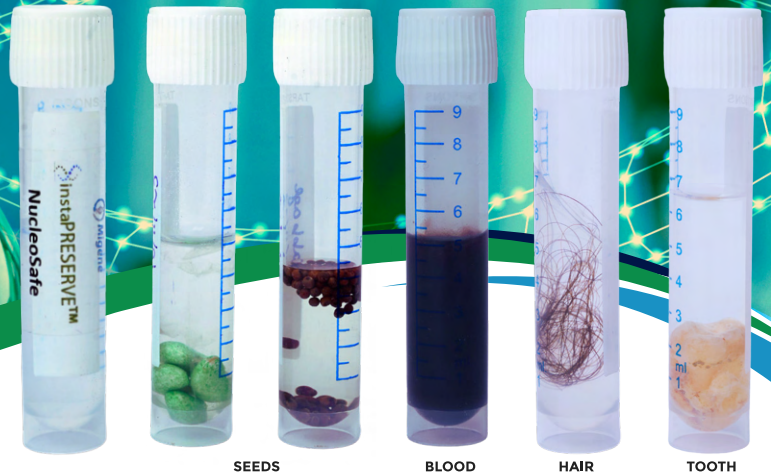
Revolutionize your biospecimen collection, transport, and analysis processes with **instaPRESERVE™ NucleoSafe** a comprehensive solution designed to enhance - efficiency and reliability in the field of diagnostics and research.



Marketed by
LIHAN BIOLOGICS

Quality Science, Amplifying Success.

instaPRESERVE™ NucleoSafe



SEEDS

BLOOD

HAIR

TOOTH

Developed by Migene, **instaPRESERVE™** offers an innovative, non-toxic alternative for fixing tissue and cancer samples, presenting a paradigm shift in biospecimen handling.

Key Features

- ✓ Cold-chain-free sample collection and transport
- ✓ Freezer free specimen storage
- ✓ Low cost in comparison to Liquid nitrogen, -80°C, Dry ice and FFPE
- ✓ Preservation and integrity of DNA
- ✓ Long term storage and prevent degradation

Key Features

- ✓ Ambient temperature storage
- ✓ Utilization - diagnostics, forensics, biobanking and research
- ✓ Unparalleled convenience in biospecimen handling
- ✓ Stability and safety assured with the gel-based formulation, Non-toxic solution, promoting a green and safer work environment, adaptable to any biospecimen



For more info & Enquiries
+91 6363955164

VV Tower, Survey No. 44/2, 1st Floor, Beratene Agrahara,
Begur Hobli, Hosur Rd, Electronic City, Bengaluru

✉ contact@migene.in sales@migene.in 🌐 www.migene.in

Workflow of *instaPRESERVE™ NucleoSafe*

Biological specimen of interest



Excised Plant



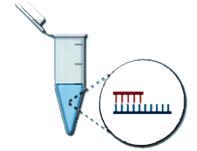
Soil



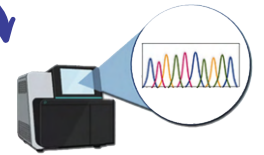
Blood



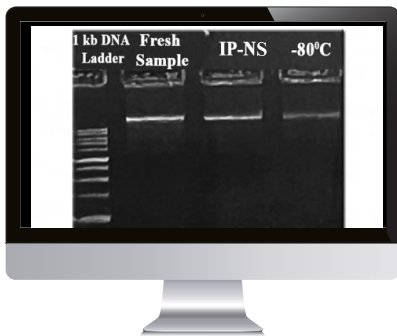
Saliva



DNA Extraction



Sequencing & Analysis



DNA from stored tissue samples



Amplified DNA from tissue samples



Real time SNP Detection

| Name | Specimen Type | Catalogue Number |
|----------------------------------|---------------|------------------|
| <i>instaPRESERVE™ NucleoSafe</i> | Human | IPNS - 001 |
| <i>instaPRESERVE™ NucleoSafe</i> | Plant | IPNS - 002 |
| <i>instaPRESERVE™ NucleoSafe</i> | Veterinary | IPNS - 003 |
| <i>instaPRESERVE™ NucleoSafe</i> | Soil | IPNS - 004 |