

Quality Science, Amplifying Success.

Revolutionize your biospecimen collection, transport, and analysis processes with **instaPRESERVE™ TissueSafe** a comprehensive solution designed to enhance - efficiency and reliability in the field of diagnostics and research.

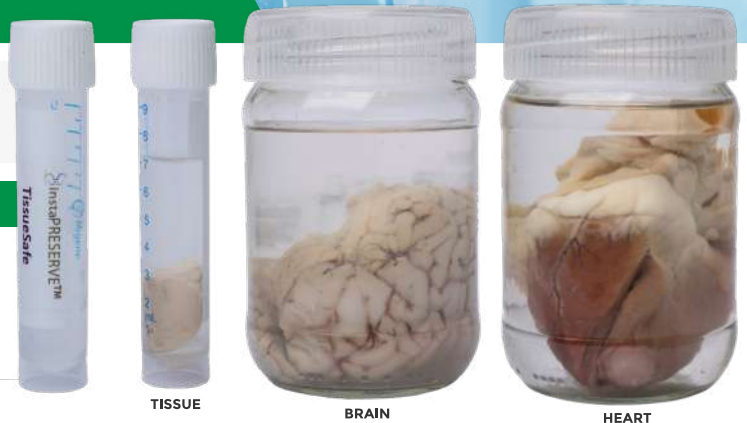
Developed by Migene, instaPRESERVE™ offers an innovative, non-toxic alternative for fixing tissue and cancer samples, presenting a paradigm shift in biospecimen handling.



Streamlined solutions for histological assessment

Key Features

- ▶ Cold-chain-free sample collection and transport
- ▶ Formalin free fixation
- ▶ Freezer free specimen storage
- ▶ Low cost in comparison to liquid nitrogen, -80 degree C, dry ice and FFPE
- ▶ Long term storage and prevent degradation
- ▶ Ambient temperature storage
- ▶ Utilization - diagnostics, forensics, biobanking and research
- ▶ Unparalleled convenience in biospecimen handling
- ▶ Stability and safety assured with the gel-based formulation
- ▶ Non-toxic solution, promoting a green and safer work environment
- ▶ Adaptable to any biospecimen

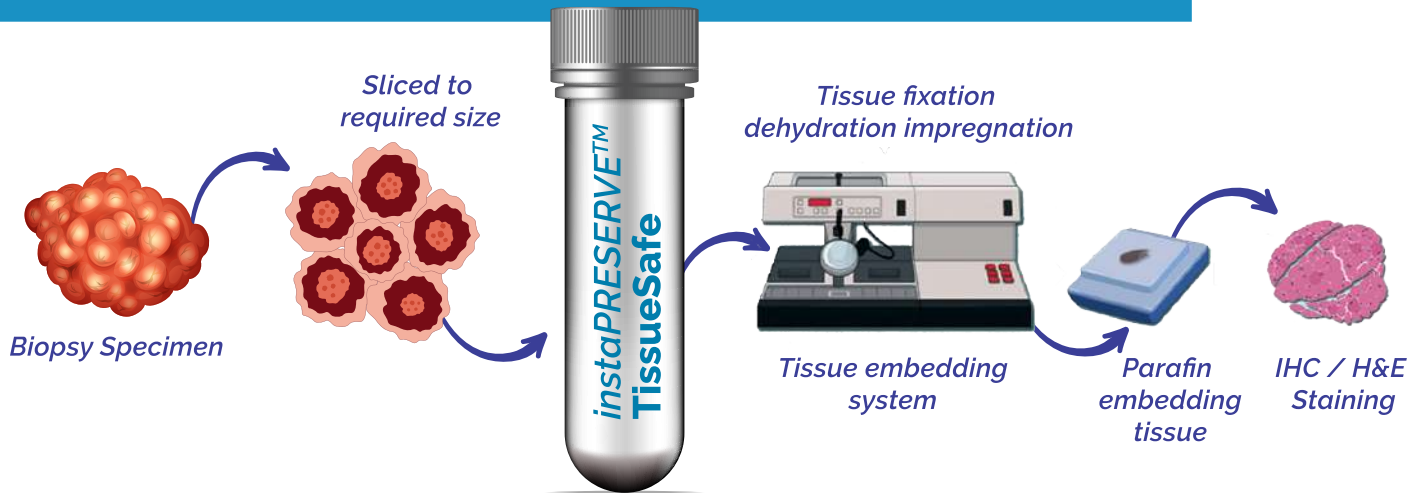


GET IN TOUCH

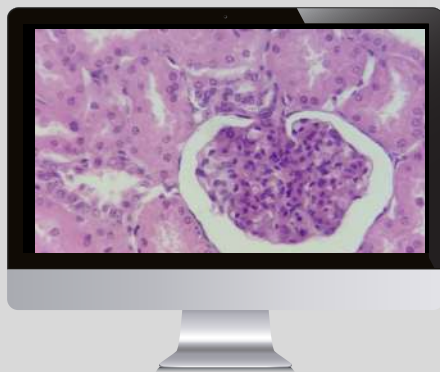
VV Tower, Survey No. 44/2, 1st Floor, Beratene Agrahara,
Begur Hobli, Hosur Rd, Electronic City, Bengaluru

+91 6363955164 contact@migene.in
www.migene.in sales@migene.in

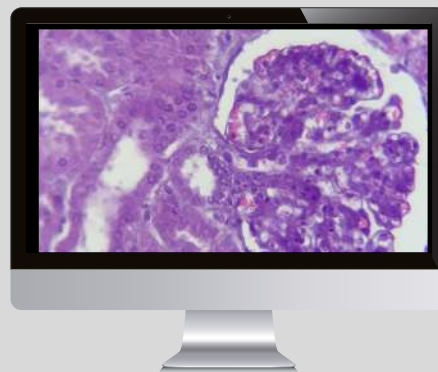
Workflow of instaPRESERVE™ TissueSafe



Comparison of H&E staining of instaPRESERVE™ sample with standard formalin fixed tissue



Swine kidney section fixed in instaPRESERVE™



Swine kidney section fixed in formalin

Name	Specimen Type	Catalogue Number
instaPRESERVE™ TissueSafe	Human	IPTS - 001
instaPRESERVE™ TissueSafe	Veterinary	IPTS - 002

GET IN TOUCH

VV Tower, Survey No. 44/2, 1st Floor, Beratene Agrahara,
Begur Hobli, Hosur Rd, Electronic City, Bengaluru

+91 6363955164 contact@migene.in
www.migene.in sales@migene.in